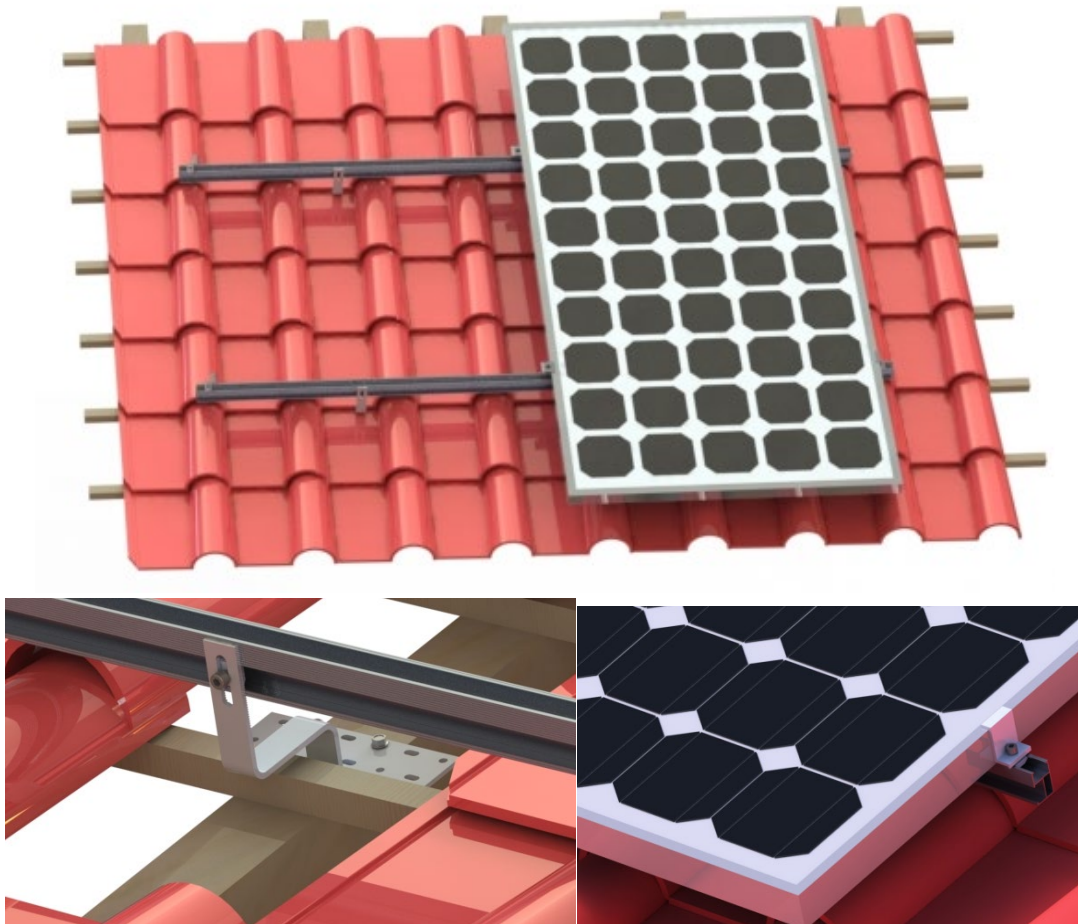




SFS-PR-01 Tile Roof Mount Installation Instructions



Safety precautions

The installer shall comply with the following specifications:

- ◇ Comply with all applicable local or national building codes, including any that may supersede this manual.
- ◇ Please use the spare parts provided by our company and the installation tools you carry (if other spare parts are used to replace our spare parts for construction, our company will not be responsible for quality problems).
- ◇ Ensure that products such as aluminum support are suitable for specific installation and installation environment.
- ◇ How to recycle: according to local regulations.



1. Part diagrams

<p>① SunRack Rail (AL6005-T5)</p> 	<p>② Mid clamp (AL6005-T5)</p> 	<p>③ End clamp (AL6005-T5)</p> 
<p>④ Rail connector (AL6005-T5)</p> 	<p>⑤ Roof hook (SS304)</p> 	<p>⑥ Earth lug Group (AL6005-T5)</p> 
<p>⑦ Grounding clip (SS304)</p> 	<p>⑧ Cable clip (SS304)</p> 	

2. Vista Previa

